



For more information, contact:
Christal Pollock, DVM, DABVP
Lafeber Company Veterinary Consultant
cpollock@lafeber.com

WEB COPY

FOR IMMEDIATE RELEASE

Save the Date



Dear Susie Wiseman

I hope your organization will be interested in sharing information about a free, live, interactive LafeberVet webinar "[Reptile and Amphibian Imaging](#)" with its members. This webinar event will be presented by Elizabeth Marie Rush, DVM, DACZM. A press release is embedded in the body of this message and can also be [downloaded from LafeberVet](#).

**FREE, live, interactive LafeberVet webinar
RACE-approved for 1 credit hour***

Reptile and Amphibian Imaging

Presenter: [Elizabeth Marie Rush](#), DVM, DACZM

Sunday, April 14
3 pm EDT (New York) (UTC -4)

[What time is this in my time zone?](#)

REGISTER NOW

Radiographs are a primary, noninvasive diagnostic tool for reptiles and amphibians. This live, interactive webinar first reviews the standard orthogonal views needed in these species as well as positioning and techniques, including the use of gastrointestinal (GI) contrast. Normal radiographic anatomy will be reviewed in each taxonomic group, before discussing some common pathological conditions, including nutritional secondary hyperparathyroidism, cardiac disorders, GI motility delay and impaction, hepatomegaly, parasitism, enteritis, foreign body ingestion, pneumonia, neoplasia, osteomyelitis, and/or fractures.

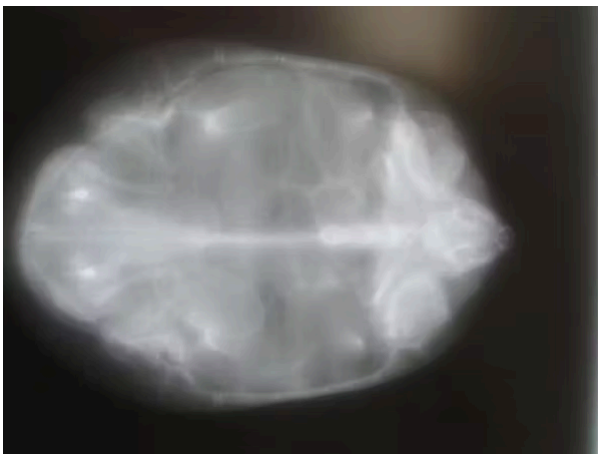


Photo credit: Wichita Falls Reptile Rescue

Lecture outline

- A. General principles
- B. Snakes
- C. Lizards
- D. Chelonians
- E. Amphibians

Register today and **visit LafeberVet**
for more information

LEARN MORE

* This program is approved for 1.0 hour of continuing education credit for veterinarians and veterinary technicians in jurisdictions that recognize American Association of Veterinary State Boards (AAVSB) Registry of Approved Continuing Education (RACE) approval.

About LafeberVet

[LafeberVet](#) is an ever-growing online library of exotic animal medicine videos, articles, client education material, forms, questionnaires, and much more. Provided by Lafeber Company, LafeberVet is for use by veterinarians, veterinary nurses, wildlife rehabilitators, students in these fields, as well as allied professionals. Access to much of LafeberVet's content is restricted however, registration is free.

About Lafeber Company

[Lafeber Company](#) was built by a father-son team of veterinarians with a shared love of animals and a special passion for birds. Dr. T.J. Lafeber developed the very first commercial bird food pellets in the back room of his veterinary clinic in the early 1970s. Today, our exotic animal diets and critical care formulas are developed by his son, Dr. Ted Lafeber, III along with top veterinarians and nutritionists. An independent laboratory tests every diet to insure optimum pet health. Lafeber Company also consults leading experts in behavior so that our diets promote dietary enrichment.

Lafeber Company
24981 N. 1400 East Road
Cornell, IL 61319 USA
800.842.6445



[EmerAidVet](#)

[LafeberVet](#)

[Contact Us](#)

[Unsubscribe Here](#)