

Photo credit: Alamy APCCNB

**FREE, live LafeberVet webinar
RACE-approved for 1 credit hour***

Presenter:

J. Jill Heatley

MS, DVM, CVA, DABVP (Avian Practice,
Reptile & Amphibian Practice), DACZM

Wednesday, January 15
12 pm EST (New York) (UTC -5)
[What time is this in my time zone?](#)

REGISTER NOW

Clinicopathologic evaluation of herptiles is useful for health assessment and monitoring. There are specific considerations when evaluating data from this taxonomic group, including sex, age, time of year/season, reproductive status, diet, captive versus wild, geographic

location, methodology, and anticoagulant. This webinar discusses hematology, biochemistry, and urinalysis features of reptiles and amphibians as well as the clinical relevance of test results.

Lecture Outline

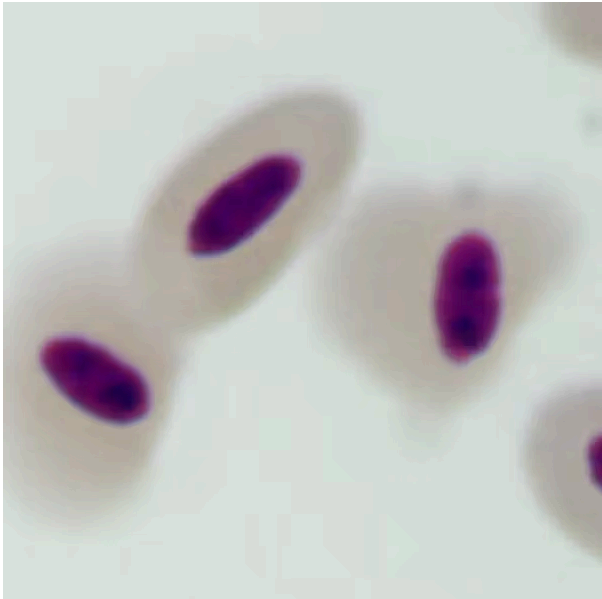


Photo: Dr. Sean Perry

- A. Sample handling
- B. Foundational comparative enzymology studies
- C. Major blood/plasma/serum proteins
- D. Acute phase reactants
- E. Biomarkers for consideration
- F. Symmetric dimethylarginine (SDMA)
- G. Lactate
- H. Bile acids
- I. Ionized calcium

[Register today](#) and **[visit LafeberVet](#)**
for more information

LEARN MORE

* This program is approved for 1.0 hour of continuing education credit for veterinarians and veterinary technicians in jurisdictions that recognize American Association of Veterinary State Boards (AAVSB) Registry of Approved Continuing Education (RACE) approval.

Webinar sponsored by...

EmerAid[®] Carnivore [Shop Now](#)

Easily tube fed through as small as an 18-gauge feeding needle for even your smallest serpents



[LafeberVet](#)

[EmerAidVet](#)

[Contact Us](#)

[Unsubscribe Here](#)